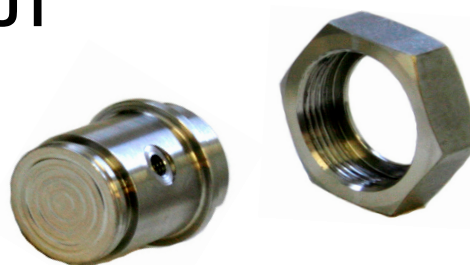




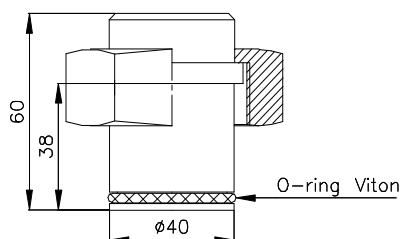
REMOTE SEALS WITH EXTENDED DIAPHRAGM AND NUT

Model LHX 67 1½"



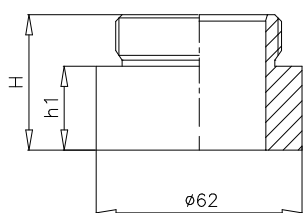
LHX models are small-size remote seals with extended diaphragm. LHX seals can be connected to process with welding connection for flat surface or with "saddle" to pipe or T-coupler which is suitable to small-size pipe lines.

Material is Aisi 316.

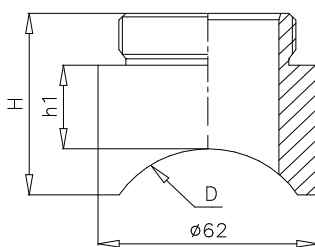


Process connections

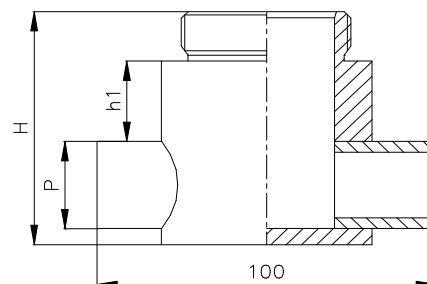
Type	Height H	h1	Saddle pipe size D	T-coupler pipe size P
H0	39	25		
H60	54	25	NS50 2" - Ø60mm	
H76	50	25	NS65 2½" - Ø76mm	
H89	49	25	NS80 3" - Ø89mm	
H114	48	25	NS100 4" - Ø114mm	
HT26	67	25		NS20 ¾" - Ø26.3x3.25
HT33	73	25		NS25 1" - Ø33.7x3.35
HT48	88	25		NS40 1½" - Ø48.2x3.25
Nominal pressure 63bar				



Type H0



Types H60 -H114



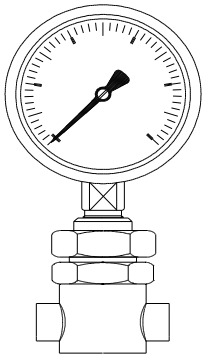
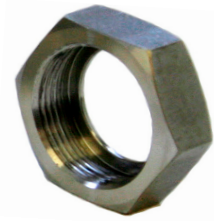
Types HT26 - HT48

Lyth-Instrument Oy
Peltosaarenkatu 8
FI-11130 Riihimäki
Finland , Europe

phone: + 358-19-760330
fax : + 358-19-722085
www.lyth.fi



SERIES LHX 67 1½"



LHX- diaphragm seal with T-coupler
connected to pressure gauge

LHX67	Chemical seal with extended diaphragm 1½"		
		Process connection	
0	Without process connection		
H	Welding connection for flat surface or pipe > 5"		
H60	Welding connection with saddle for 2" - 60mm pipe		
H76	Welding connection with saddle for 2 1/2" - 76mm pipe		
H89	Welding connection with saddle for 3" - 89mm pipe		
H114	Welding connection with saddle for 4" - 114mm pipe		
HT26	Welding T-coupler 3/4" - 26,3mm pipe		
HT33	Welding T-coupler 1" - 33,7mm pipe		
HT42	Welding T-coupler 1 1/4" - 42,4mm pipe		
HT48	Welding T-coupler 1 1/2" - 48mm pipe		
		Measuring connection	
R	BSP 2=1/2" 3=3/8" 4=1/4" female thread 7=1/2" 8=3/8" 9=1/4" male thread		
N	NPT 2=1/2" 3=3/8" 4=1/4" female thread 7=1/2" 8=3/8" 9=1/4" male thread		
H	Connected to measuring instrument with capillary		
XM	Connected to transmitter with side connection		
		Capillary	
-	Without capillary or cooling element		
S2H/	Cap. 3.00x1.00 / capillary lenght		
S1H/	Cap. 3.18x1.76/ capillary lenght		
JK	Cooling element		
		Body	Diaphragm Wetted parts
000	AISI 316	AISI 316L	AISI 316
005	AISI 316	AISI 316L	PTFE
		Options	
T	O-ring PTFE		
	AISI 316	AISI 316L + PTFE	AISI 316
		Filling fluids	
-look filling fluid datasheet			

LHX67 HT26 N9 JK 005 - -

- LHX -remote seal 1 1/2"
- Process connection with welding T-coupler for DN 20 pipe
- Connection to measuring equipment NPT 1/4" male
- With cooling element
- Body AISI 316
- Diaphragm AISI 316 coated with PTFE
- Filling fluid Q134