



THREADED DIAPHRAGM SEALS

Model LK

Small-sized threaded diaphragm seals of model LK are suitable for a small plumbing and places, in where the measuring diaphragm would take up a position on the level of the process pipe or the tank's inner level of matter. So any kind of "rising pipes" aren't formed, whom the process matter would clod up in.

Diaphragm seals are suitable especially to the pressure measurements of the mass-pipes.

Diaphragm seals are manufactured in three sizes:

with conical male pipe thread (DIN) BSPT 1", BSPT 1½", BSPT 2"

with straight male pipe thread (DIN) G 1", G 1½", G 2"

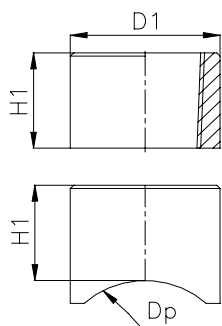
with NPT-thread (ANSI) NPT 1", NPT 1½", NPT 2"

The material of the body is constantly the stainless steel AISI 316 and the material of the diaphragm is AISI 316L.

Because the diameter of the diaphragm is small we don't recommend to use the size of 1" under in the measurements of 2 bar. Also the use of the capillary tube is limited.

Optional process connections of the diaphragm seals: welding connection for a flat surface
welding connection with a saddle
T-coupler with welding ends (body pipe smaller than 1")

Welding connection for flat surface

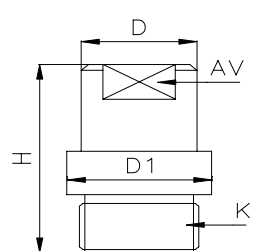


Dimension of welding connection for flat surface		
BSPT- ja NPT-threads	D1	H1
1"	45	25
1½"	65	25
2"	75	25
G-thread		
1"	45	22
1½"	65	22
2"	75	22

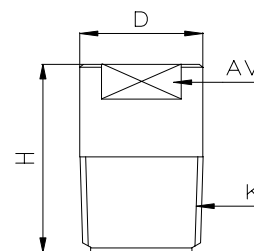
Dimension of welding saddle connection		
Pipe's Ø	G-thread	BSPT- and NPT-threads
Dp	H1	H1
42	22	25
48	22	25
60	22	25
72	22	25
89	22	25
114	22	25

Saddle connection

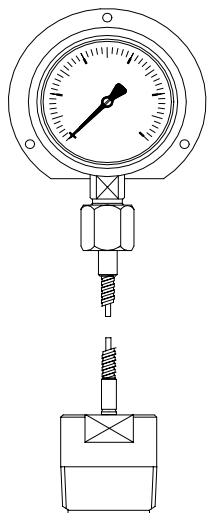
Dimension of diaphragm seals					
Model	Process thread K	D mm	AV mm	H mm	Diaphragm Ø mm
LK.K6	BSPT 1"	34	27	60	28
LK.K67	BSPT 1½"	48	41	60	42
LK.K66	BSPT 2"	60	50	60	54
LK.R6	G 1"	34	27	60	28
LK.R67	G 1½"	48	41	60	42
LK.R66	G 2"	60	50	60	54
LK.N6	NPT 1"	34	27	60	28
LK.N67	NPT 1½"	48	41	60	42
LK.N66	NPT 2"	60	50	60	54
Nominal pressure 250 bar					



Pipe thread male (G)



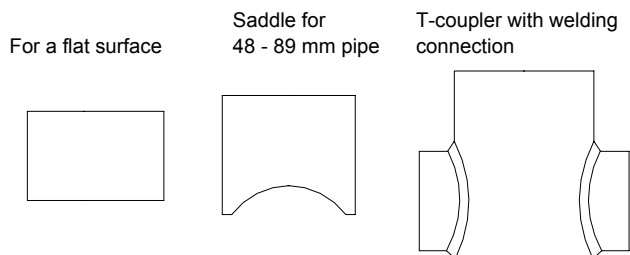
KR/BSPT- and NPT-threads



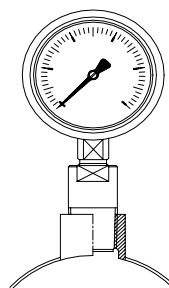
LK diaphragm seal connected with capillary to pressure gauge with backflange

LK. Flush mount diaphragm seal with process thread	
Process thread	
K_	Conical pipe thread 6 = 1" 67=1 1/2" 66 =2"
R_	Cylinder pipe thread 6 = 1" 67 =1 1/2" 66 =2"
N_	NPT-thread 6 = 1" 67 =1 1/2" 66 =2"
Measuring connection	
R_	BSP 2=1/2" 3=3/8" 4=1/4" female, 7=1/2" 8=3/8" 9=1/4" male
N_	NPT 2=1/2" 4=1/4" female, 7=1/2" 9=1/4" male
H	Connected to measuring instrument with capillary
Capillary	
-	Without capillary or cooling element
S2H/	Cap. 3,00x1,00 Capillary length meters
S1H/	Cap. 3,18x1,76 Capillary length meters
JK50	Cooling element 50 mm
JK	Cooling element 120 mm
Body Diaphragm	
000	AISI 316 AISI 316L
222	Titan Titan
060	AISI 316 DUPLEX (=SAF 2205)
666	DUPLEX DUPLEX (=SAF 2205)
050	AISI 316 AISI 316L + PTFE
Filling fluids	
See separate data sheet for filling liquids	

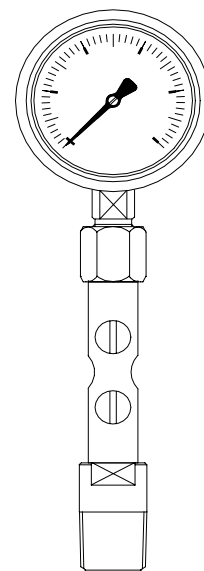
- Diaphragm seal with process thread
- Process connection size BSPT 1"
- Connection to measuring equipment female thread G 1/2"
- Body and wetted parts AISI 316/AISI 316L
- See separate Halocarb -20...+200°C Inert



Welding connections for LK diaphragm seals



LK diaphragm seal with saddle connected to pressure gauge
Process connector is option



LK diaphragm seal connected to pressure gauge with cooling element