



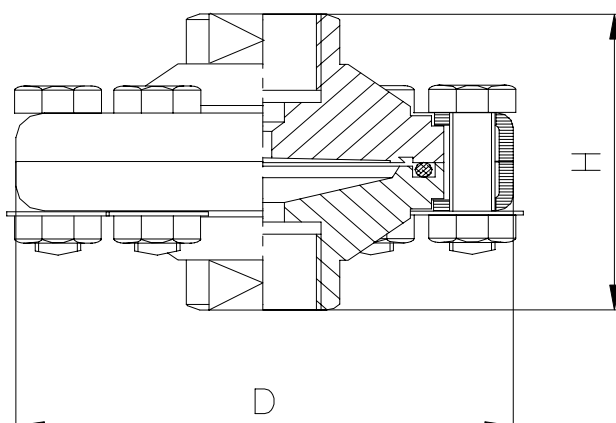
THREADED DIAPHRAGM SEALS

Model LD

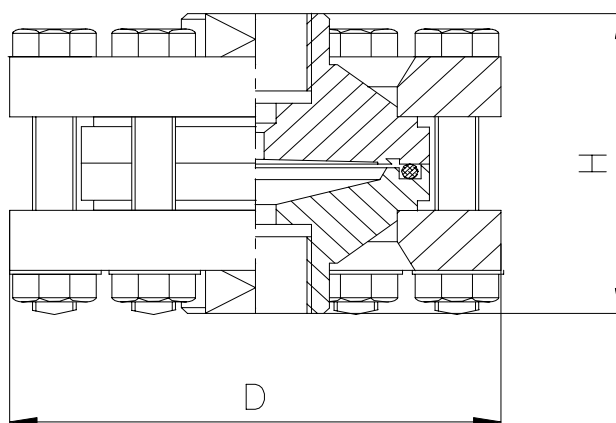
When the process connections of the diaphragm seal is expected to be small thread connection, the diaphragm seal of the model LD is good choice. The structure of diaphragm seals is two-parted. The measuring diaphragm is connected to the upper part of the diaphragm seal's body. The diaphragm seal's upper and lower parts are connected together with tightening circles and screws.

Diaphragm seals could be connected to actual measuring equipment either directly or with capillary tube.

The process connection of the diaphragm seal's basic model is G ½" female. Another sizes of the thread are possible. Diaphragm seals are suitable especially to measure pressure of fluids and gas. The diaphragm seal is not suitable to measure blocking and crystallising masses.

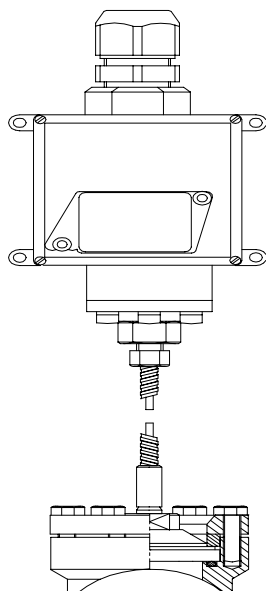


LD-diaphragm seal PN 25.....PN 40

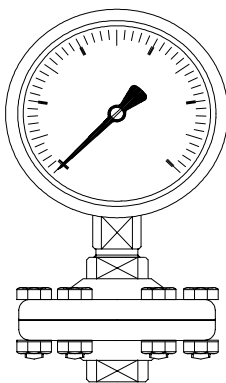


LD-diaphragm seal PN 100.....PN 400

PN	D	H	Bolts
25	87	56	8xM8x30
40	87	56	8xM8x30
100	90	56	8xM8x40
250	110	56	8xM12x50
400	120	56	8xM12x70
600	110	79	6xM16x60



LDH-diaphragm seal
connected to CCs-pressure
switch with capillary



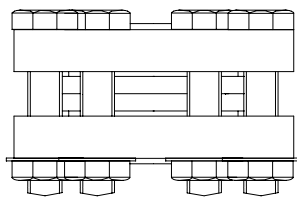
LD-diaphragm seal
connected to
pressure gauge

LD.	Two-part diaphragm seal				
R_ K_ N_ 15100 1540 2540	Process connection				
	BSP 2=1/2" 3=3/8" 4=1/4" female, 7=1/2" 8=3/8" 9=1/4" male				
	BSPT 2=1/2" 3=3/8" 4=1/4" female, 7=1/2" 8=3/8" 9=1/4" male				
	NPT 2=1/2" 3=3/8" 4=1/4" female, 7=1/2" 8=3/8" 9=1/4" male				
	DN15 PN100 flange				
DN15 PN40 flange					
DN25 PN40 flange					
Nominal pressure and tightning ring material					
25	25 - 40 bar Zn steel				
100	100 bar AISI 316				
250	250 bar AISI 316				
400	400 bar AISI 316				
600	600 bar AISI 316				
Measuring connection					
R_	BSP 2=1/2" 3=3/8" 4=1/4" female, 7=1/2" 8=3/8" 9=1/4" male				
N_	NPT 2=1/2" 3=3/8" 4=1/4" female, 7=1/2" 8=3/8" 9=1/4" male				
H	Connected with capillary, welded				
Capillary					
-	Without capillary or cooling element.				
S2H/_	Cap. 3,00x1,00mm	Capillary length meters			
S1H/_	Cap. 3,18x1,76mm	Capillary length meters			
JK50	Cooling element 50 mm				
JK	Cooling element 120 mm				
	Body	Diaphragm	Lower part	Wette parts	
000	AISI 316	AISI 316L	AISI 316	AISI 316	
011	AISI 316	HAST C276	HAST C276	HAST C276	
222	Titan	Titan	Titan	Titan	
030	AISI 316	Tantal	AISI 316	AISI 316	
060	AISI 316	DUPLEX	AISI 316	AISI 316	
066	AISI 316	DUPLEX	DUPLEX	DUPLEX	
050	AISI 316	AISI 316L + PTFE	AISI 316	AISI 316	
0150	AISI 316	HAST C276 + PTFE	AISI 316	AISI 316	
0350	AISI 316	TANTAL + PTFE	AISI 316	AISI 316	
055	AISI 316	AISI 316L + PTFE	PTFE	PTFE	
Filling fluids					
See separate data sheet for filling liquids					

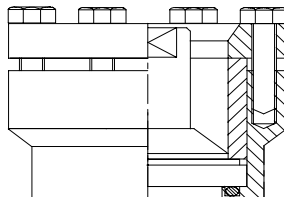
LD. R7 25 R2 - 000

- Two-part diaphragm seal
- Process connection G1/2" male
- Nominal pressure PN 25
- Instrument connection G1/2" female

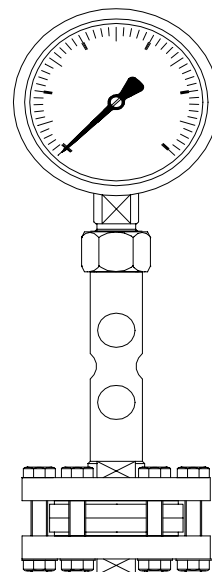
- Body and wetted parts AISI 316
- See separate data sheet



LD-diaphragm seal / PN 400



LDH-diaphragm seal / PN 100
(for flat surface or >4" pipe)



LD-diaphragm seal connected to
pressure gauge with cooling element