



HYGIENIC DIAPHRAGM SEALS FOR FOOD INDUSTRY

Model LE-P

Model LE-P includes diaphragm seals with extended diaphragm which attains food industry's even heaviest standards about hygiene and tidiness. The diaphragm body of diaphragm seals is extended, thus the diaphragm takes up a position on the level of the process pipe or the tank's inner level of matter without leaving any kind of "rise pipes" in the process.

The use of the diaphragm seals requires the welding process coupler designed especially for this model. On the end of diaphragm seal's body are cone and O-ring which press against the counter-cone of the process coupler, then is formed unified and very hygienic process connection.

The material of the body and wetted parts is the stainless steel AISI 316.

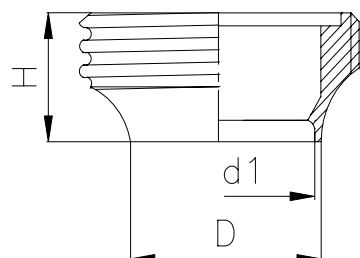
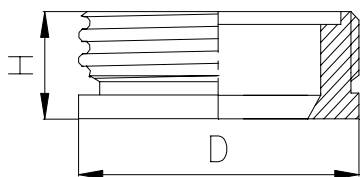
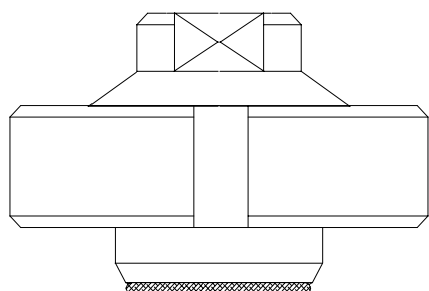
The material of O-ring gasket is Viton.

Diaphragm seals are manufactured only on the sizes of SMS 38 (1½") and SMS 51 (2"), with nut.

There are two models of welding process coupler: for pipe and for tank.

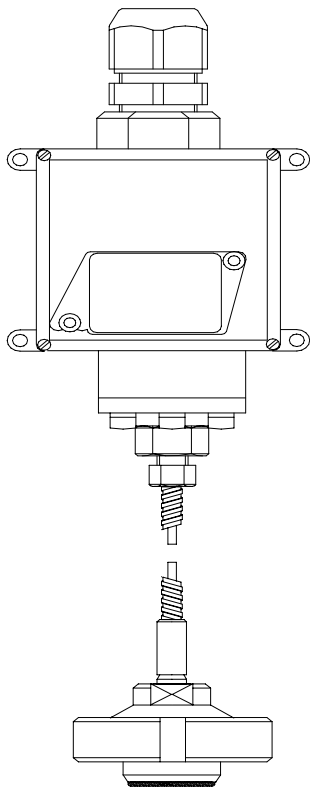
Diaphragm seals are usually connected with thread connection directly to the measuring equipment, but it is possible to use capillary tube in the special cases.

Filling fluid is NEOBEE M20 (=filling fluid is accented by FDA).



Model	NS	H	D
LE 2103	1½" - 38 mm	22	60
LE 2105	2" - 51 mm	25	70

Model	NS	H	D	d1
LE 2703	1½" - 38 mm	27	38	35
LE 2705	2" - 51 mm	30	51	48

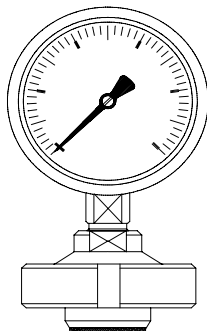


LE-P diaphragm seal with capillary connected to CCS-pressure switch

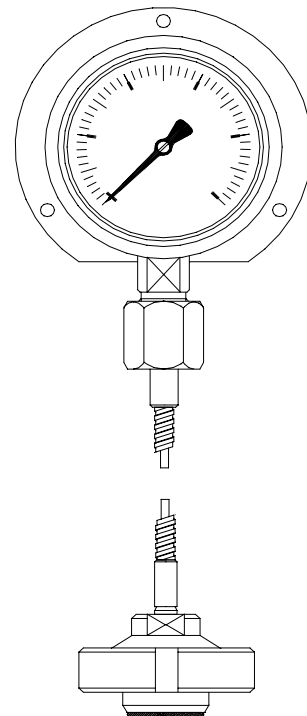
LE	Special hygienic P-series diaphragm seals for food industry	
2	Other diaphragm seals for food industry	
	SMS-standard	
	Process connector	
0	Without process connector	
	Hygienic remote seal, extended diaphragm, with nut	
4	Female connection (with nut)	
	Nominal size	
3P	3P = SMS 38mm	
5P	5P = SMS 51mm	
	Measuring connection	
R_	BSP 2=1/2" 3=3/8" 4=1/4" female 7=1/2" 8=3/8" 9=1/4" male	
N_	NPT 2=1/2" 4=1/4" female 7=1/2" 9=1/4" male	
H	Connected to measuring instrument with capillary	
XM	Connected to transmitter with side connection	
	Capillary	
-	Without capillary or cooling element.	
S2H/_	Cap 3.00x1.00 b=1 d=2 f=3 h=4 j=5 l=6 n=7 p=8 r=9 t=10	
S1H/_	Cap 3.18x1.76 B=1 D=2 F=3 H=4 J=5 L=6 N=7 P=8 R=9 T=10	
JK50	Cooling element 50 mm	
JK	Cooling element 120 mm	
	Body	Diaphragm
000	AISI 316	AISI 316L
050	AISI 316	AISI 316L + PTFE
	Filling fluid	
	See separate data sheet for filling liquids	

LE. 2 0 4 5P R2 - 000

- Special P-serie for food industry
- Hygienic diaphragm seal SMS-standard
- Without welding proc.connector
- Female connection (with nut)
- Nominal size SMS 51mm
- Connection to measuring instrument G1/2" female
- Body and wetted parts AISI 316L
- See separate data sheet



LE-P diaphragm seal connected to pressure gauge



LE-P diaphragm seal with capillary connected to pressure gauge